

# **ANNUAL PARENT SURVEY 2024/25**

## **FINDINGS**

**05.06.2025**



# SURVEY DETAILS

## Objective:

To gather parents' opinions on how their children feel at school, how the school is run and overall what they see the school doing very well and the improvements they feel are needed.

To assess progress on some key measures versus last year's survey results (May 2024).

A short survey was sent to all school parents and carers.

Responses were collected from 28<sup>th</sup> April to 23<sup>rd</sup> May 2025.



- **80 people responded**
- 56% of respondents have a child/children in Reception or KS1
- 68% in KS2 only
- 24% in KS1 and KS2



# KEY TAKE OUTS

- **Out of 16 statements there are 6 with 90% or over level of agreement.** Those statements are:
  1. My child is safe at school (94%)
  2. The school is well led and managed (93%)
  3. The school teaches my child to respect people from different races, backgrounds and religions (93%)
  4. The school encourages me to be more involved in school activities (93%)
  5. My child is happy at school (91%)
  6. The school helps my child develop good learning habits & skills and to try his/her best (91%)
- The **statements with the highest level of disagreement are:**
  1. The school keeps me well informed of my child's progress (24%)
  2. My child has plenty of opportunities to develop his/her talents (24%)
  3. The school deals effectively with bullying, harassment and racism when they happen (20%)
  4. The school works in partnership with parents to better support children's development (18%)



# KEY TAKE OUTS

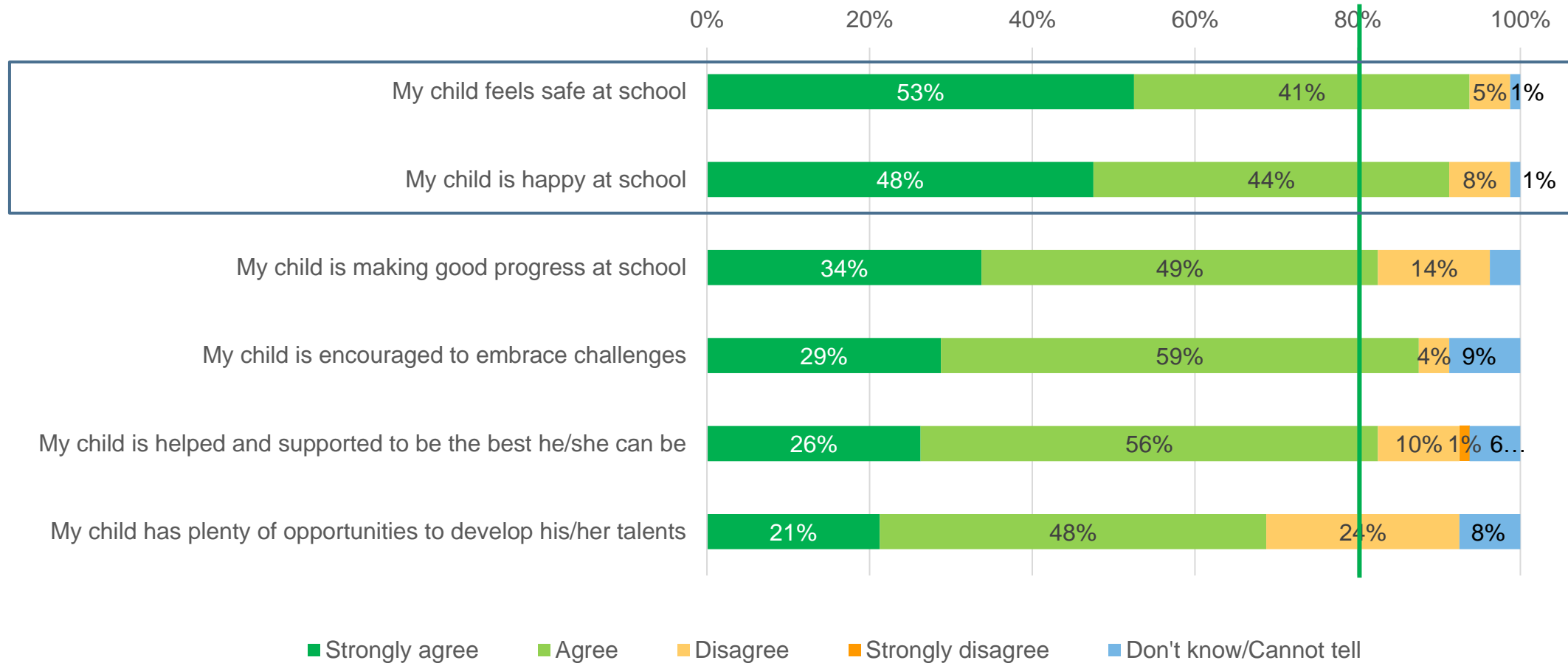
- Parents and carers recognise the **numerous strengths** of the school, which have remained consistent along the years. The ones with the most mentions are: 1) the positive environment, which is kind, supportive, nurturing, caring, happy, friendly, safe; 2) good, caring teachers and staff; 3) the community/family feel; 4) its values and catholic ethos and 5) the good discipline and children being respectful and polite.
- The main **improvement suggestions** are to provide more and better progress updates (some parents referencing the apps used by secondary schools), to improve the school meals and the PE provision (incl having a dedicated PE teacher), to offer more sports opportunities and events, to push more the higher achievers, to improve the supervision at the playground, esp at lunchtimes, and to expand the after-school club options.
- Overall, **95%** of parents and carers are **likely or very likely to recommend St Agatha's school to others.**



# MY CHILD AT SCHOOL

Over 90% of parents and carers agree that their children **feel safe** and **are happy** at school. Other statements have a top 2 box agreement over 80%, apart from having plenty of opportunities to develop talents at school.

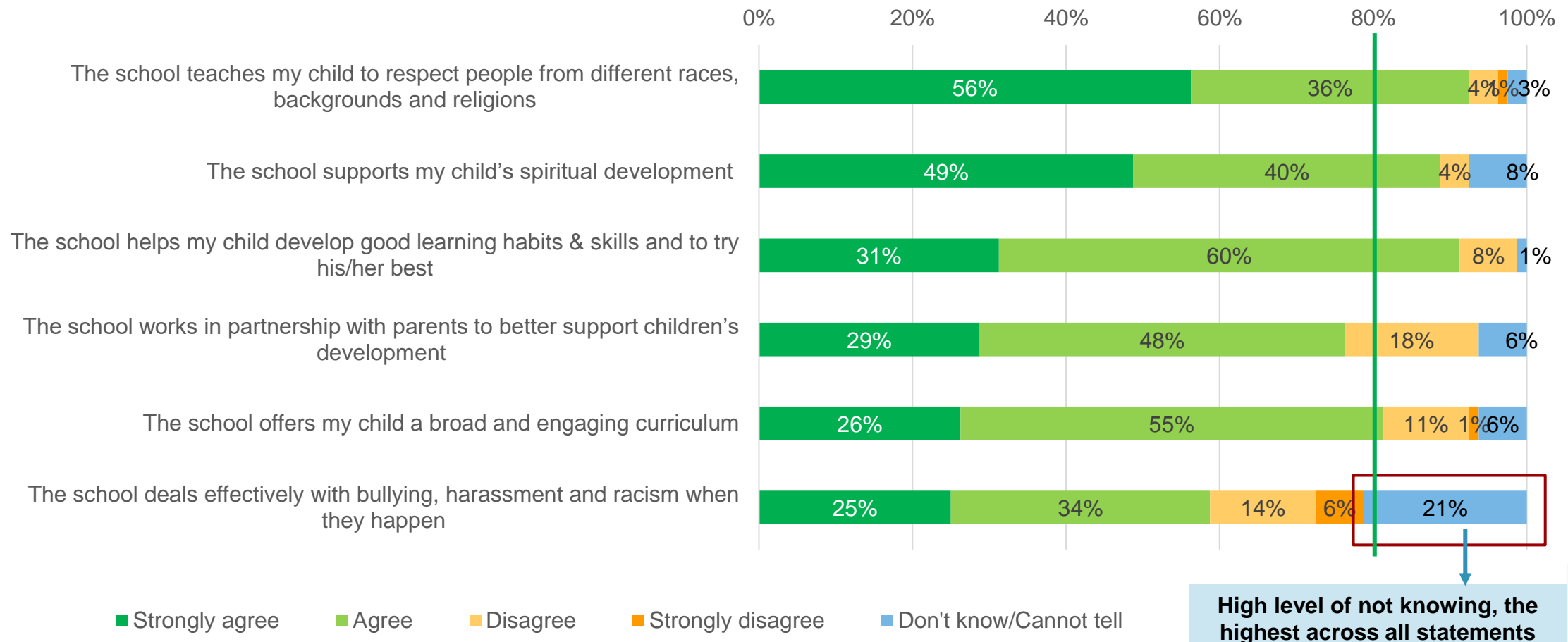
Please state your level of agreement with the following statements related to your child experiences at school



# THE SCHOOL

**High scores** on the statements related to key areas the school focuses on with **scope to improve on the partnership with parents to support children's development and on dealing effectively with bullying, harassment and racism when it occurs.**

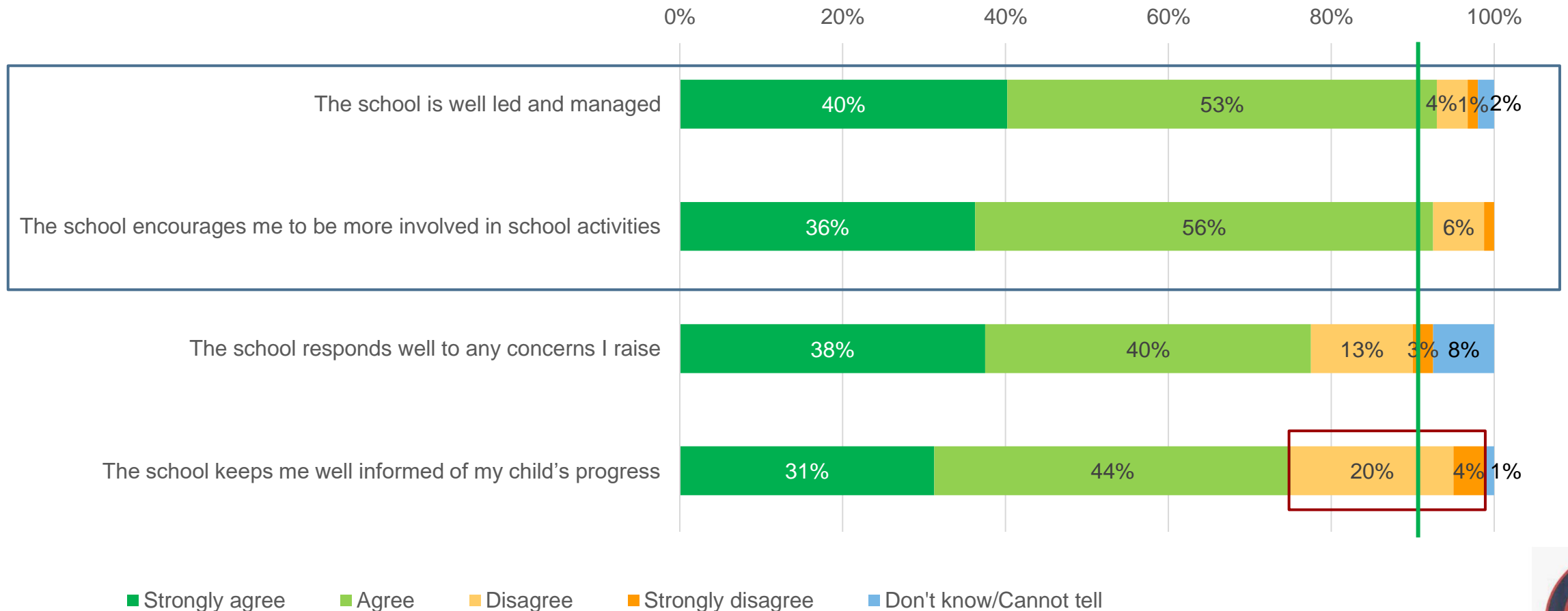
Please state your level of agreement with the following statements related to **some specific school areas**



# RUNNING OF THE SCHOOL

Over 90% of parents/carers think the **school is well led and managed** and feel **encouraged to be more involved**. The area with the **highest level of disagreement** is on **being informed on my children's progress**.

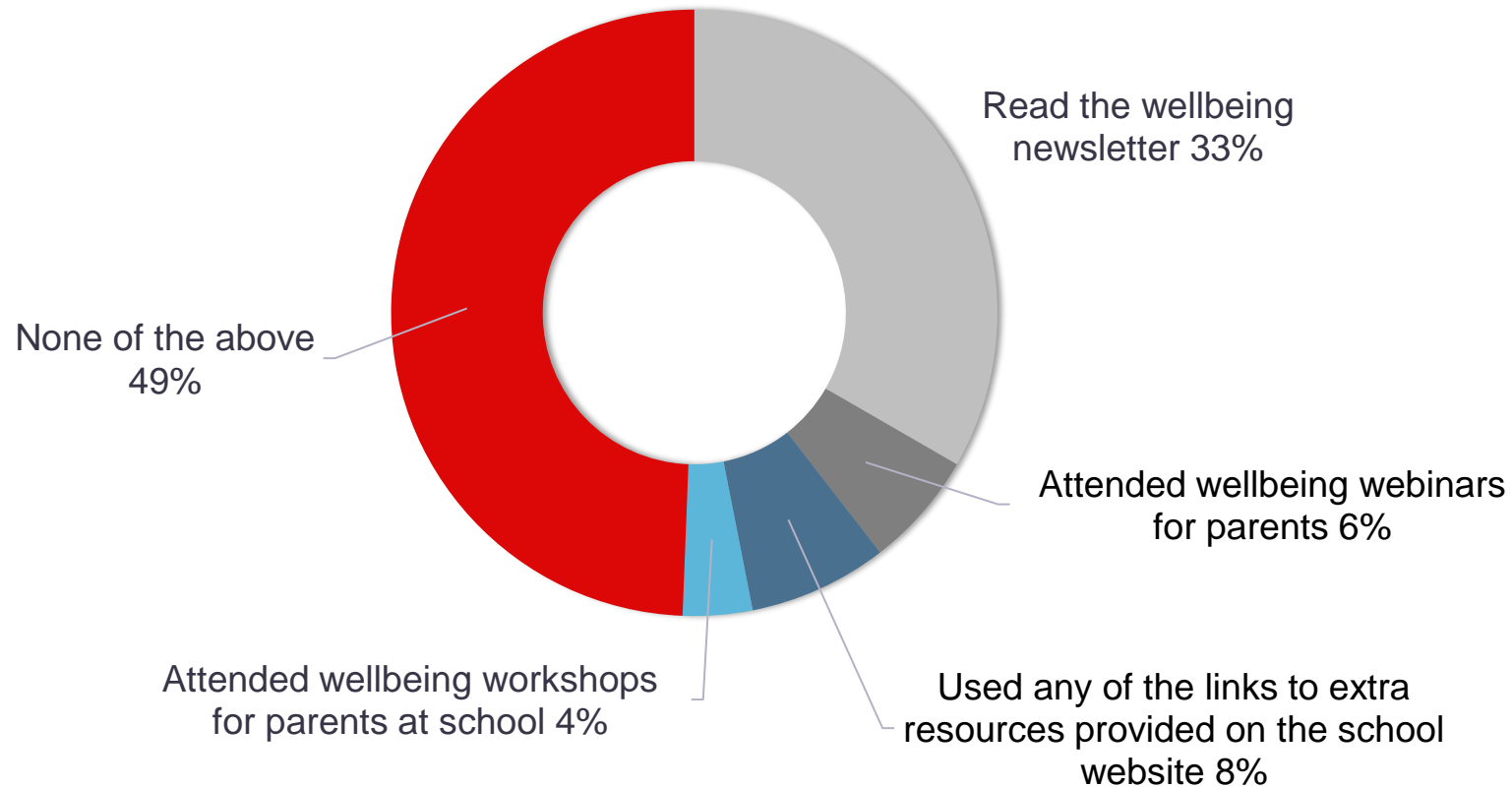
Please state your level of agreement with the following statements related to **how the school is run**



## EMOTIONAL HEALTH & WELLBEING

**Only half of parents & carers used some of the resources the school made available to them. There has been considerably less engagement in this area vs last year when 77% of parents & carers used them.**

*In recent years the school has doubled its effort to support children and families on emotional health and wellbeing. Please let us know if you have used any of the resources listed below*



# Experience using the **emotional health & wellbeing resources** and suggestions provided

- *My child loves the Peer Mental scheme in the playground.*
- *We've had great support from Serena in the mental health support team. Her interventions have been well pitched and well managed.*
- *Ample support provided to my son with regards to his mental health.*
- *It has helped me a lot to take more care of my child's health.*

## **Suggestions:**

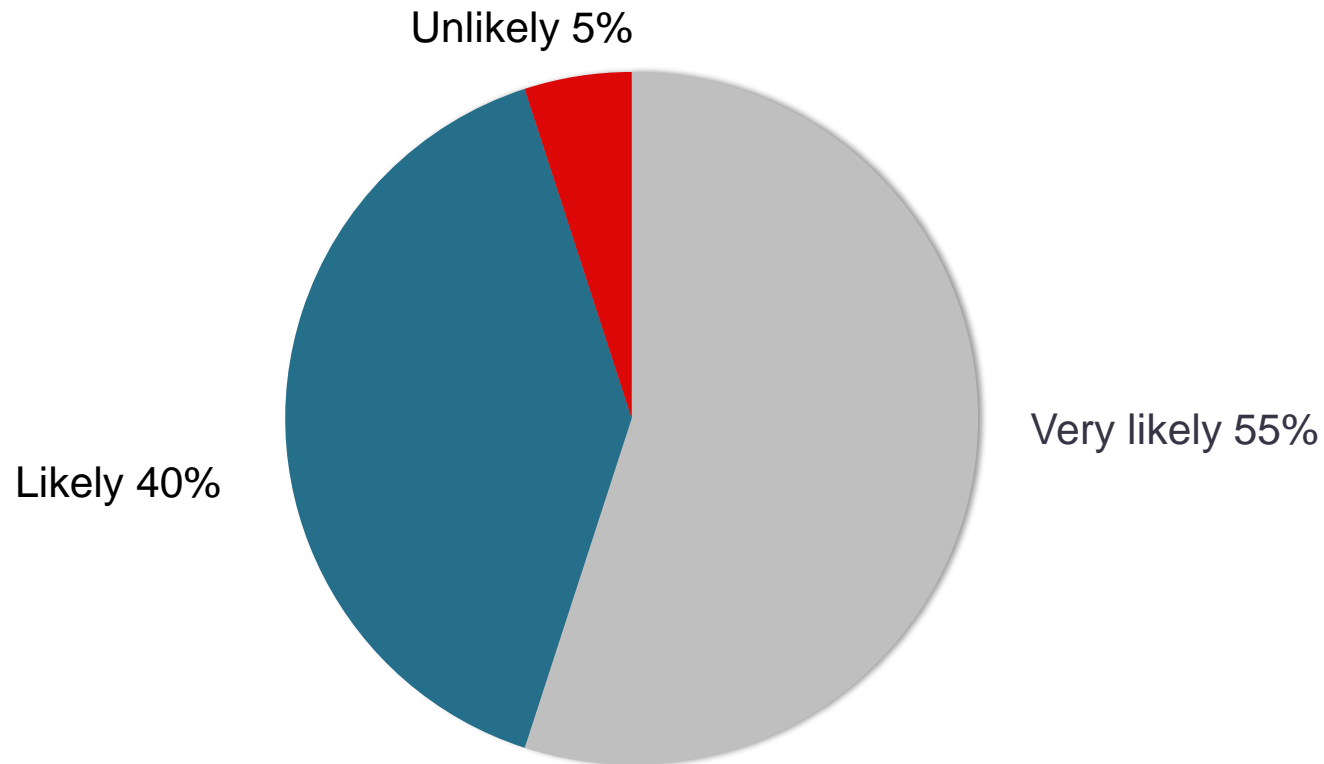
- Well-being sessions on the curriculum timetable every week throughout the year
- Some group activities or 1-1 class to provide support or training to kids for emotional self awareness
- Group discussions
- Build even more emotional resilience and strength as this will be needed later in life
- Mental health tutorials with topics focused on different year groups on Teams to make them convenient to attend



## LIKELIHOOD TO RECOMMEND THE SCHOOL

St Agatha's is a school that **the big majority of parents & carers** are likely or very likely to recommend to others.

*Overall, how likely are you to recommend the school to others?*



**95%** are likely or very likely to recommend the school



# School's strengths

- **Positive environment** -> kind, supportive, nurturing, caring, happy, friendly, safe
  - **Good, caring teachers & staff**
  - **Community/family feel**
  - **Values & catholic ethos**
  - **Respectful & polite, good discipline**
  - **Good leadership** -> incl. good Headteacher, dedicated, highly involved; well managed
  - **Diverse, inclusive & welcoming**
  - **Good communication with parents**
  - **Good size**
  - **Good extra curricular activities**
  - **Strong PSA**
- After school clubs
  - Focus on wellbeing
  - Quick action/ response to issues

**With  
numerous  
mentions**

*most mentioned  
in red*



# Improvement suggestions

- **More/better progress updates\***
- **Better school meals**
- **Better PE provision, incl dedicated PE teacher**
- **More sports opportunities/events**
- **More push to higher achievers**
- **Better supervision at lunchtimes/ in the playground**
- **More clubs**
- **Pay more attention to children's complaints**
- **More residential trips**
- **Non-sport activities (drama, mindfulness, creative workshops)**
- **More opportunities to do music**

\* Some parents refer to apps used by secondary school that work well and provide daily/weekly updates on how children are doing at school

*most mentioned  
in red*

**With  
several  
mentions**

- More outdoor learning
- More consistent homework
- Help children to become more resilient
- Ban phones at school

- Better school facilities
- More intercultural activities
- More diversity in the staff to reflect the school population



## Comments from parents – 1 out of 2

- *We love that this school is multicultural. We love a new idea with books in a different language in a library. Will be lovely to do some extra clubs to give children opportunities to continue learning a nationality language as well.*
- *I am so glad my children attend St Agatha's, they are very happy at this school, and it shows daily - they are full of life even at the end of the day and always talk about the teachers and what they learnt.*
- *We are very happy with the school and appreciate all the hard work the staff puts in. Thank you for creating such a supportive and nurturing environment for the children!*
- *One of the key strengths of St. Agatha's School is its warm and supportive environment. The teachers are caring, communication is excellent, and the school truly focuses on each child's well-being and development.*
- *Overall, I looove the school. I am very happy with how my child has settled in and thank everyone for helping her enjoy this first year.*
- *The school seems to be well led by Mrs Cahill. I like the involvement of the PTA in the school and the opportunities for parents to engage. Mrs Cahill's enthusiasm and care for the children and school is to be commended. I like the variety of school clubs that are offered.*
- *Good sense of community - small school, good after school clubs and flexible care options, homework system is much improved, good works done to school environment, encourage children to be active e.g. daily mile, good PSA and fundraising for the school.*
- *I feel it's a supportive school, where teachers try to pay attention to where kids are and are encouraged and supported to achieve more.*



## Comments from parents – 2 out of 2

- *Clearer academic **progress updates**, even a brief tick-list or single sentence summary every half term would be ideal, parents evening is very brief, and it is hard to know if there are changes.*
- *Automated system for **progress reports** / pupil feedback at more regular intervals, register of absences, ask for school contributions by direct debit all on one school app. The secondary schools to this better.*
- *It would be great if parents could receive a **weekly learning overview**. This way, we would have a clearer idea of what our children have been doing at school. It would also allow us to communicate more with them about their school experiences, help consolidate what they've learned and even extend their learning at home.*
- *I think it would be very beneficial for children to have a **physical books** to read at home rather than using Collins Hub account to practice reading skills. I personally think that children shouldn't spend too much time in front of the screen and unfortunately, they have to if they want practice reading. It's very unhealthy for them and their eyes. I think lots of parents would agree with me as every year this is one of the first questions on parents meeting with new teacher at the beginning of the year. Children already have to use computers to practise maths on Mathletics and timetable rock stars.*
- *The school continues to struggle with staffing and so the basic infrastructure around teaching does not seem to be there and so **lessons** are often having to be **covered by non-core teaching staff** to the detriment of the children. This also seems to manifest in the continued decrease of additional enrichment offered to the children. **Residentials and school trips** have decreased despite this not being the norm in other primary schools in the borough, we still have no dedicated sports faculty, so the additional sports offered are limited and reliant on external providers. There also feels to be a significant shift away from core subjects such as maths and English towards RE, which while I understand we are a catholic school, concerns me as a parent for their ongoing education.*
- *I am concerned about what seems many days with the **lessons being covered by some other member of staff** and rarely the same one. I understand that may happen occasionally but this year it has happened many times for prolong period of times. Also I am concerned about the **behaviour of some children in the playground** not being addressed.*

